



VERDE LOUNGE

Harrows

CRAFTED FOR CONNECTION

[HARROWS.CO.NZ](https://harrows.co.nz)

Crafted for
connection.



Introducing Verde

The Verde Lounge is 100% designed and manufactured in New Zealand by Harrows . The collection features three sizes, a chair, 2 seater and 3 seater.

The generous and soft seat are wrapped with clean vertical lines of the back and arms. A beautiful solid American Ash base brings the design together adding a refined touch of elegance to your interior.







Where
comfort and
conversation
come together.

Armchair

The generously sized armchair measures 850mm wide by 800mm deep, providing ample space for a comfortable sit.

2 seater + 3 seater

Available in two sizes, the two-seater is 1700mm long, while the three-seater extends to 2200mm, offering flexibility for different spaces.

Seam detail

Vertical seam detailing on the back and arms creates a clean, structured look.



Upholstered

The soft, supportive cushion is fully upholstered in your choice of fabric or leather for a tailored finish.

Solid Timber Base

A solid American Ash base provides durability and stability, with the option to stain it in any standard colour.



- 01

Key Features

- 01 Available in one, two or three seater
- 02 Solid American Ash base, stained in any standard colour
- 03 Generously sized armchair
- 04 Clean vertical seam detailing on the back and arms
- 05 Fully upholstered in your choice of fabric or leather



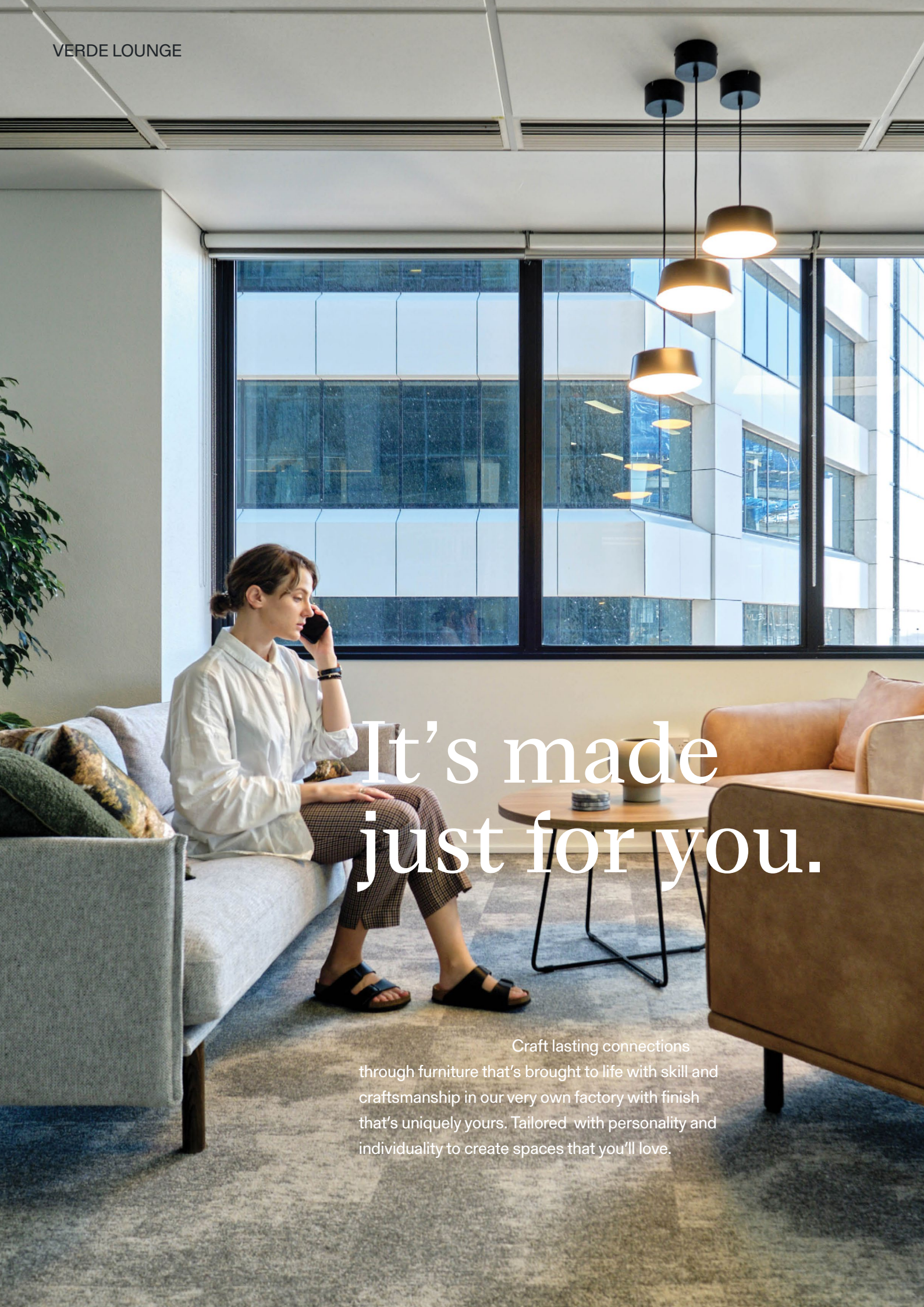
- 02, 04



- 03



- 04, 05



It's made
just for you.

Craft lasting connections
through furniture that's brought to life with skill and
craftsmanship in our very own factory with finish
that's uniquely yours. Tailored with personality and
individuality to create spaces that you'll love.





Key Features

- 01
NZ designed and manufactured
- 02
Available in three sizes
- 03
Upholstered in fabric of choice
- 04
Stained colour of choice

Verde



The generous and soft seat are wrapped with clean vertical lines of the back and arms. A beautiful solid American Ash base brings the design together adding a refined touch of elegance to your interior. The collection features three sizes, a chair, 2 seater and 3 seater.

Made from	Timber frame with sprung upholstered construction Solid American Ash base
Finishes	Upholstered in fabric of choice 6 l/m per chair required 9 l/m per 2 seater required 11 l/m per 3 seater required Stained any standard colour
Sizes	Chair - 850w x 800d x 730h 2 Seater - 1700w x 800d x 730h 2.5 Seater - 730h x 1950w x 800d 3 Seater - 2200w x 800d x 730h Seat 420h
Application	Indoor use
Warranty	5 year commercial warranty
Lead time	Made to order - 6 to 8 weeks
Origin	New Zealand
Designer	Harrows
Certification	Global GreenTagCert™ GreenRate Level C GreenTagPHD™ PlatinumHEALTH™ & HealthRATE™ Declaration™

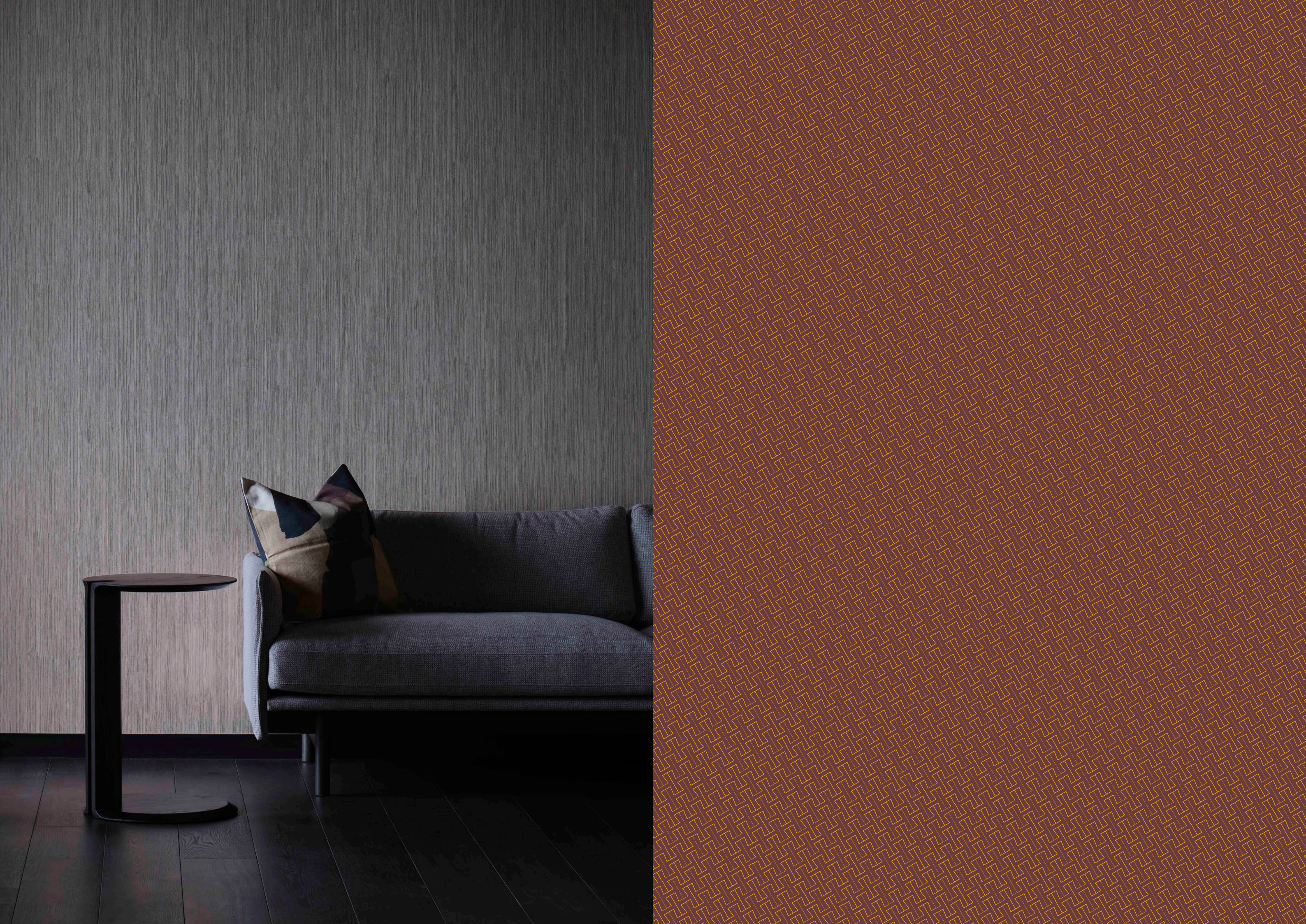


Made for life.

The Verde Lounge carries GreenRate™ Level C certification and PlatinumHEALTH™ HealthRATE™ certifications under the Global GreenTag International Product Health Declaration™ (GreenTag PHD™) program.

In the Green Star® NZ program Level C carries 50% of the credit points. The GreenTag PHD is recognised by WELL™ and LEED®.





Life is built on the interaction of people. We fill spaces with thoughtfully crafted furniture to facilitate these interactions.

Let's talk.

0800 142 233
SALES@HARROWS.CO.NZ

AUCKLAND EXPERIENCE CENTRE
ORANGE CORONATION HALL
147 NEWTON ROAD
EDEN TERRACE — AUCKLAND

HEAD OFFICE & MFG.
31 - 33 REDRUTH STREET
PO BOX 3023 — TIMARU

