

POISE COLLECTION

---

# Harrows

CHAMPIONS OF SOCIAL SPACES [HARROWS.COM.AU](https://www.harrows.com.au)

Champions of  
social spaces.



# Introducing Poise

Versatile, strong and attractive, the Poise Collection speaks volume in any setting. With a hard wearing surface it is a robust and durable design which is also lightweight and practical. The striking sharknose edge profile showcases the exposed ply edge for a subtle yet striking detail.

Poise features tables, conference tables, leaners and occasionals with a sleek HPL top and angular steel legs.







Where  
meaningful  
connections  
are fostered.

HPL Top

Poise has an HPL top over a Birch Ply substrate, providing hard wearing surface available in a range of colours.

Integrated Power

A range of power + data options can be seamlessly integrated. These options vary in design and ability, ranging from the seamlessly integrated Flip Power and In desk Power Boxes, to simple cut outs with cable trays.

Sharknose Edge

Featuring a 30° Sharknose edge profile that showcases the exposed ply edge of the HPL top.

Steel Legs

Tops are mounted on distinctive steel legs, providing a sturdy and sleek design that can be powder coated in any colour.

Range of Sizes

Poise offers tables, leaners, occasional tables and conference tables all in a range of sizes.



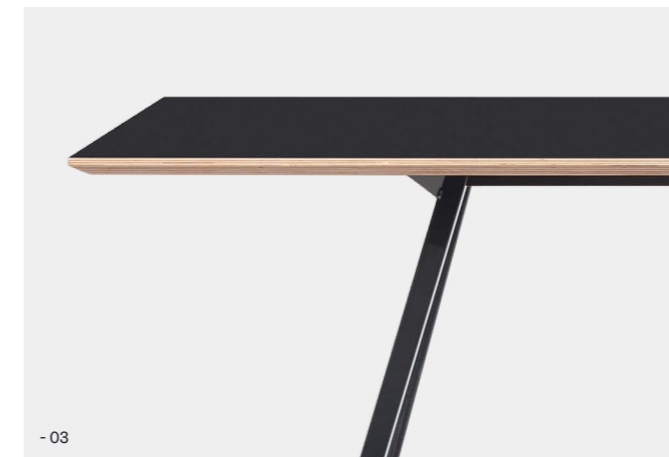
- 01

Key Features

- 01 Sharknose edge profile showcases the exposed ply edge with HPL top
- 02 Legs are powder coated in colour of choice
- 03 Mounted on sleek steel legs
- 04 HPL tops are available in a range of colours



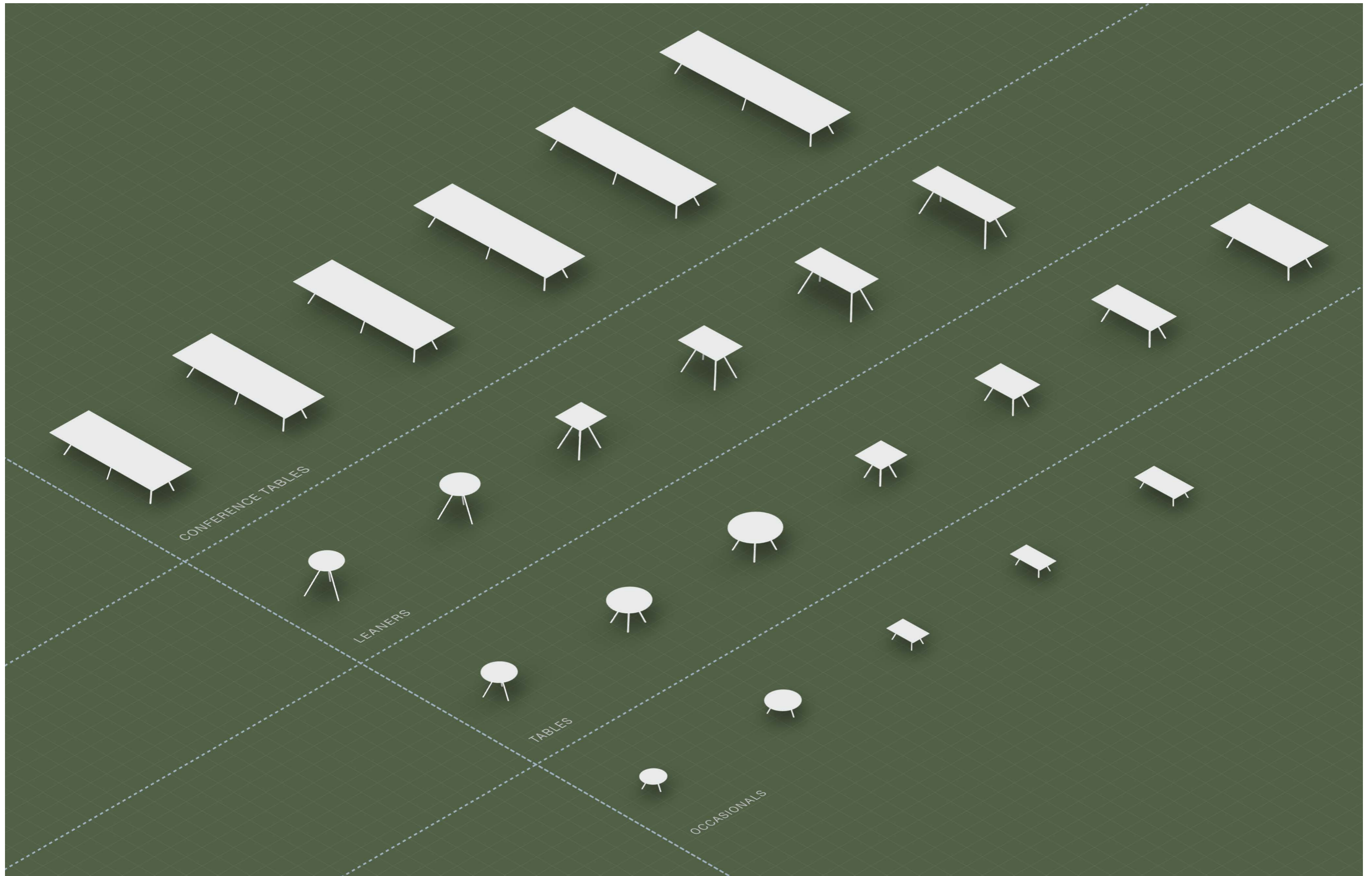
- 02



- 03



- 04





#### Key Features

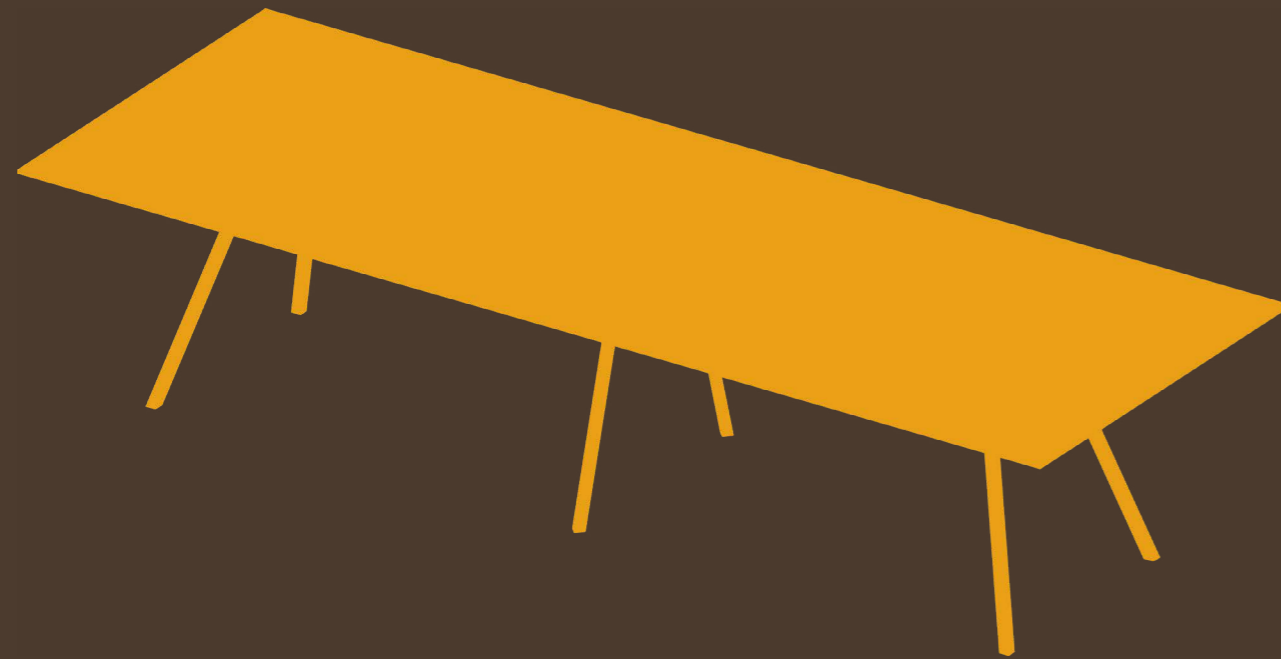
- 01  
Designed in NZ, made in NZ
- 02  
Legs powder coated in colour of choice
- 03  
Poise Collection includes leaners, tables + occasionals
- 04  
Lightweight, robust & durable design
- 05  
Carries Global GreenTagCert™ GreenRate Level C

# Poise



Versatile, strong and attractive, the Poise Cafe Table speaks volumes in a social setting. An ideal cafe table with a hard wearing surface that easily crosses over from cafeteria table to restaurant table. Robust and durable, they are also lightweight and practical. The striking sharknose edge profile showcases the exposed ply edge for a subtle yet striking detail.

<u>Made from</u>	24mm HPL over Birch Ply top mounted on steel legs
<u>Finishes</u>	HPL in choice of 6 colours Powder coated any standard colour
<u>Standard sizes</u>	800 / 1000Ø 800 x 800 730h Additional sizes available on request
<u>Application</u>	Indoor use
<u>Warranty</u>	10 year commercial warranty
<u>Lead time</u>	Made to order - 8 to 10 weeks
<u>Origin</u>	New Zealand
<u>Designer</u>	Harrows
<u>Certification</u>	Global GreenTagCert™ GreenRate Level C GreenTagPHD™ PlatinumHEALTH™ & HealthRATE™ Declaration™



#### Key Features

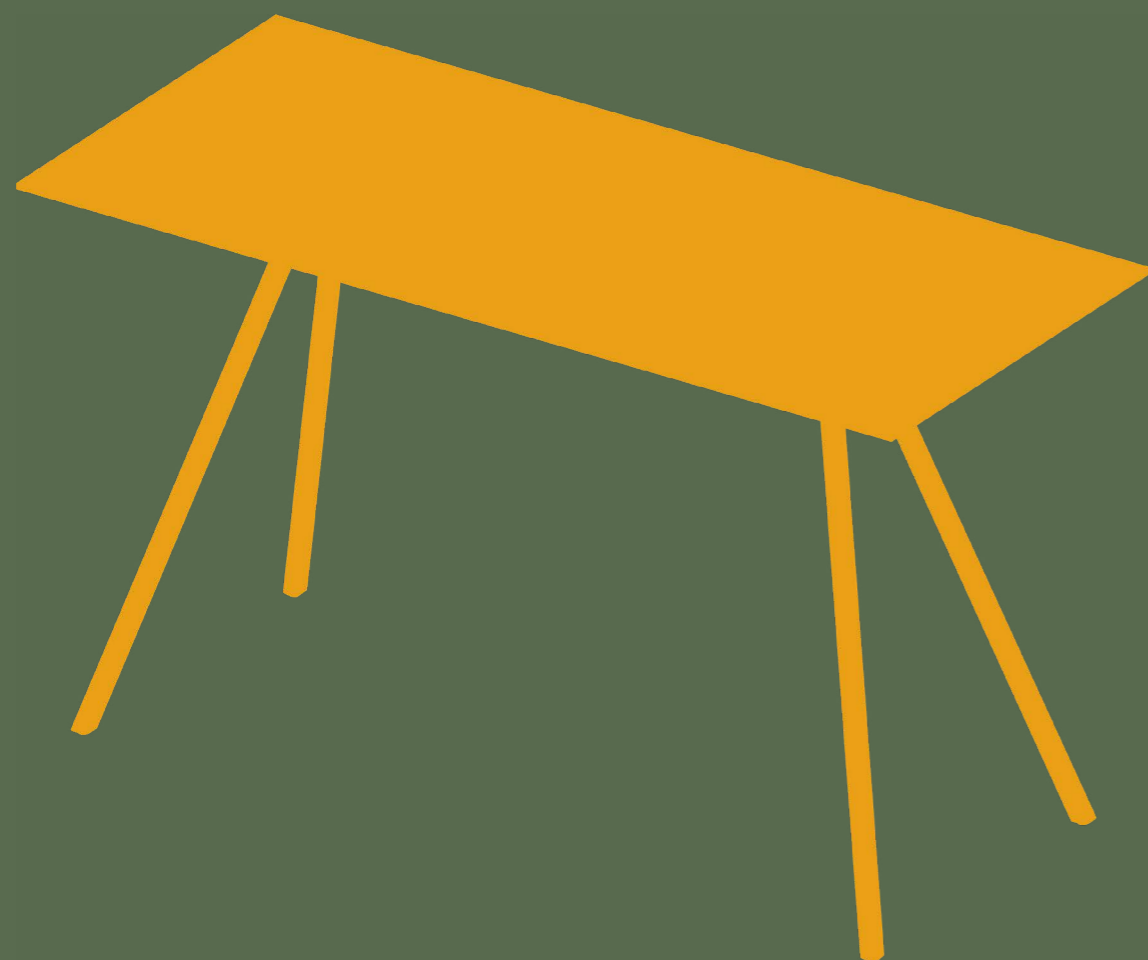
- 01  
Designed in NZ, made in NZ
- 02  
Legs powder coated in colour of choice
- 03  
Poise Collection includes tables, leaners + occasionals
- 04  
Designed for unobstructed seating
- 05  
Carries Global GreenTagCert™ GreenRate Level C

# Poise



Versatile, strong and attractive, the Poise Conference Table is an ideal option for the modern office space. With unobstructed seating on all sides and a striking sharknose edge profile showcasing an exposed ply edge, this conference table is a cohesive blend of design and functionality, making it the perfect statement for an open plan collaborative space.

<u>Made from</u>	24mm HPL over Birch Ply top mounted on steel legs
<u>Finishes</u>	HPL in choice of 6 colours Powder coated any standard colour
<u>Standard sizes</u>	3300 / 3600 / 3900 x 1200 4200 / 4500 / 4800 x 1200 730h Additional sizes available on request
<u>Application</u>	Indoor use
<u>Warranty</u>	10 year commercial warranty
<u>Lead time</u>	Made to order - 8 to 10 weeks
<u>Origin</u>	New Zealand
<u>Designer</u>	Harrows
<u>Certification</u>	Global GreenTagCert™ GreenRate Level C GreenTagPHD™ PlatinumHEALTH™ & HealthRATE™ Declaration™



#### Key Features

- 01  
Designed in NZ, made in NZ
- 02  
Legs powder coated in colour of choice
- 03  
Poise Collection includes leaners, tables + occasionals
- 04  
Lightweight, robust & durable design
- 05  
Carries Global GreenTagCert™ GreenRate Level C

# Poise



Versatile, strong and attractive, the Poise Leaner speaks volumes in collaborative spaces. With a hard wearing surface that is ideal for lunchrooms, bars or foodcourts, this leaner is robust and durable while also being lightweight and practical. The striking sharknose edge profile showcases the exposed ply edge for a subtle yet striking detail.

<u>Made from</u>	24mm HPL over Birch Ply top mounted on steel legs
<u>Finishes</u>	HPL in choice of 6 colours Powder coated any standard colour
<u>Standard sizes</u>	800 / 900Ø 800 x 800 1200 / 1800 / 2400 x 800 1050h Additional sizes available on request
<u>Application</u>	Indoor use
<u>Warranty</u>	10 year commercial warranty
<u>Lead time</u>	Made to order - 8 to 10 weeks
<u>Origin</u>	New Zealand
<u>Designer</u>	Harrow's
<u>Certification</u>	Global GreenTagCert™ GreenRate Level C GreenTagPHD™ PlatinumHEALTH™ & HealthRATE™ Declaration™



#### Key Features

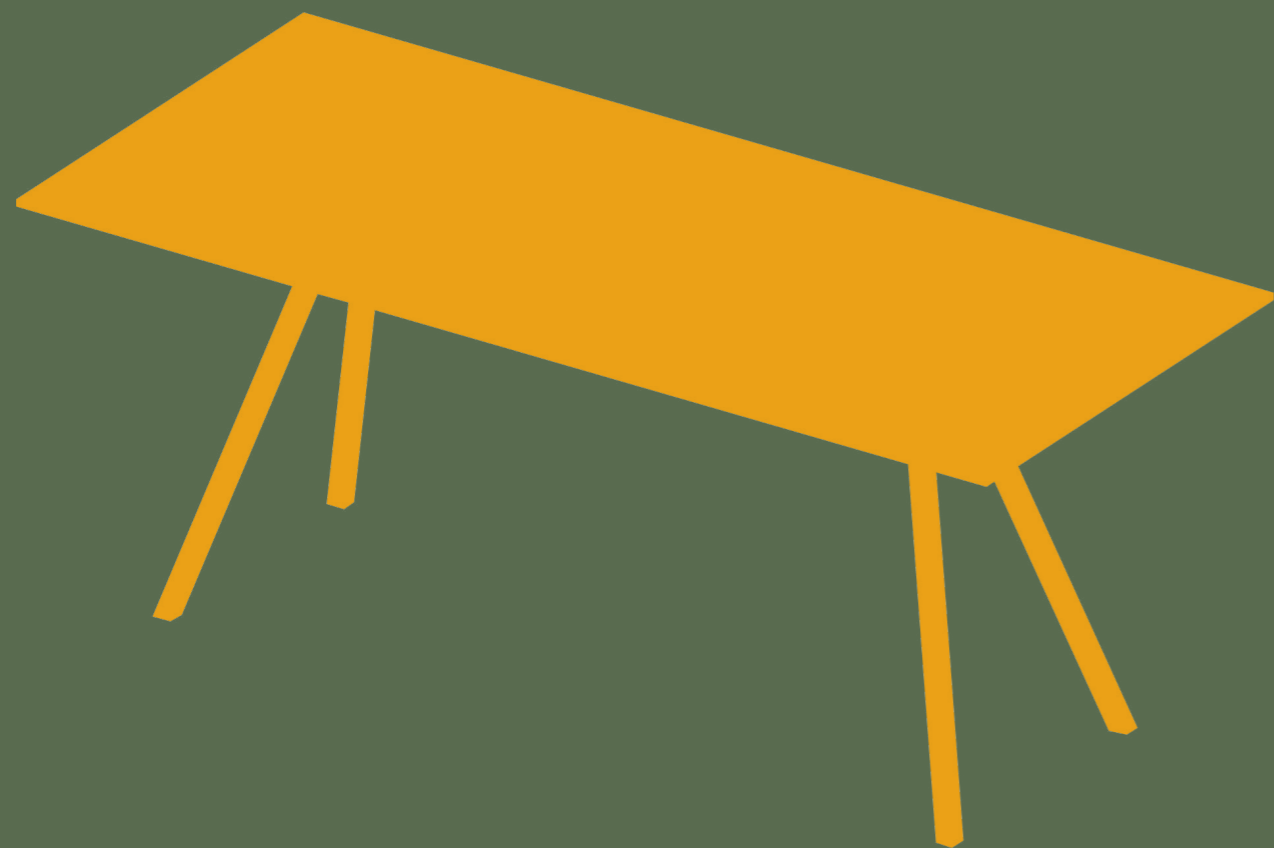
- 01  
Designed in NZ, made in NZ
- 02  
Legs powder coated in colour of choice
- 03  
Poise Collection includes leaners, tables + occasionals
- 04  
Lightweight, robust & durable design
- 05  
Carries Global GreenTagCert™ GreenRate Level C

# Poise



Versatile, strong and attractive, the Poise Occasional range speaks volume in a commercial setting, the ideal side table to make a refined design statement in your commercial space. Robust and durable they are also lightweight and practical.

<u>Made from</u>	18mm HPL over Birch Ply top mounted on steel legs
<u>Finishes</u>	HPL in choice of 9 colours Powder coated any standard colour
<u>Standard sizes</u>	600 / 800Ø 800 / 900 x 500 200 x 600 340h
<u>Edge Profile</u>	30° Sharknose as standard
<u>Application</u>	Indoor use
<u>Warranty</u>	10 year commercial warranty
<u>Lead time</u>	Made to order - 8 to 10 weeks
<u>Origin</u>	New Zealand
<u>Designer</u>	Harrows
<u>Certification</u>	Global GreenTagCert™ GreenRate Level C GreenTagPHD™ PlatinumHEALTH™ & HealthRATE™ Declaration™



#### Key Features

- 01  
Designed in NZ, made in NZ
- 02  
Legs powder coated in colour of choice
- 03  
Poise Collection includes leaners, tables + occasionals
- 04  
Lightweight, robust & durable design
- 05  
Carries Global GreenTagCert™ GreenRate Level C

# Poise



Versatile, strong and attractive, the Poise Table speaks volume in any setting. An ideal hospitality or commercial table with a hard wearing surface that easily crosses over from cafe table to meeting table. Robust and durable they are also lightweight and practical.

<u>Made from</u>	24mm HPL over Birch Ply top mounted on steel legs
<u>Finishes</u>	HPL in choice of 6 colours Powder coated any standard colour
<u>Standard sizes</u>	1200Ø 1200 / 1800 x 800 2400 x 1200 730h Additional sizes available on request
<u>Application</u>	Indoor use
<u>Warranty</u>	10 year commercial warranty
<u>Lead time</u>	Made to order - 8 to 10 weeks
<u>Origin</u>	New Zealand
<u>Designer</u>	Harrows
<u>Certification</u>	Global GreenTagCert™ GreenRate Level C GreenTagPHD™ PlatinumHEALTH™ & HealthRATE™ Declaration™



# Made for life.

The Poise Collection carries GreenRate™ Level C certification and PlatinumHEALTH™ HealthRATE™ certifications under the Global GreenTag International Product Health Declaration™ (GreenTag PHD™) program.

In the Green Star® NZ program Level C carries 50% of the credit points. The GreenTag PHD is recognised by WELL™ and LEED®.





Life is built on the interaction of people. We fill spaces with thoughtfully crafted furniture to facilitate these interactions.

Let's talk.

0800 142 233  
SALES@HARROWS.CO.NZ

AUCKLAND  
ORANGE CORONATION HALL  
147 NEWTON ROAD – EDEN TERRACE  
AUCKLAND – NEW ZEALAND

TIMARU  
31 REDRUTH STREET  
TIMARU – NEW ZEALAND

SALES@HARROWS.COM.AU

MELBOURNE  
GROUND FLOOR – 50 QUEEN STREET  
MELBOURNE CBD – VICTORIA

